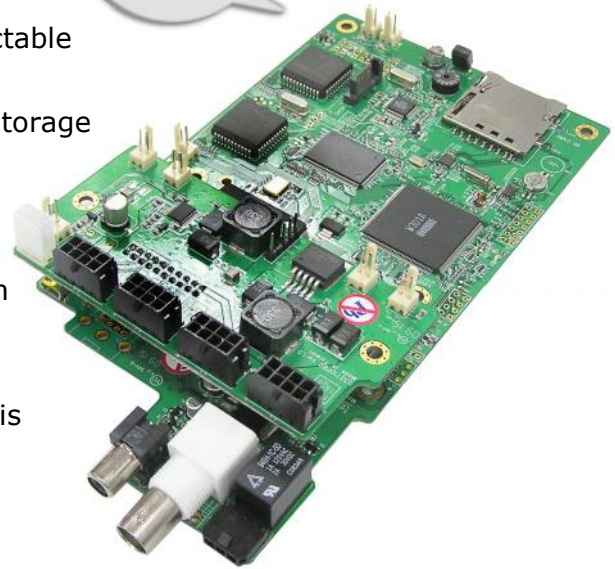


4CH Anti-Vibration DVR Board

Features

- ✓ 4-ch input externally and 1-ch input internally swappable as channel 1
- ✓ Total frame up to 60fps (NTSC)/ 50fps (PAL) selectable
- ✓ Hi-resolution recording at D1 for each channel
- ✓ Anti-vibration design for SD card and SATA HDD storage
- ✓ Rigorous components and 32G SD storage to fit vibration environment
- ✓ Single cable design for powering camera, video, audio & triggering signal making installation easier, expenses lesser yet tidy and neat
- ✓ Wide range working voltage from DC11V~36V and supply DC12V for cameras when power input is above 16V
- ✓ Power surge protection up to 40VDC
- ✓ Backup: USB drive/ SD card / Software via PC
- ✓ Motion detection/ schedule / trigger
- ✓ SD card overwrite or full stop selectable
- ✓ User friendly software for 4ch playback simultaneously by versatile bundled software

Ready for Customization



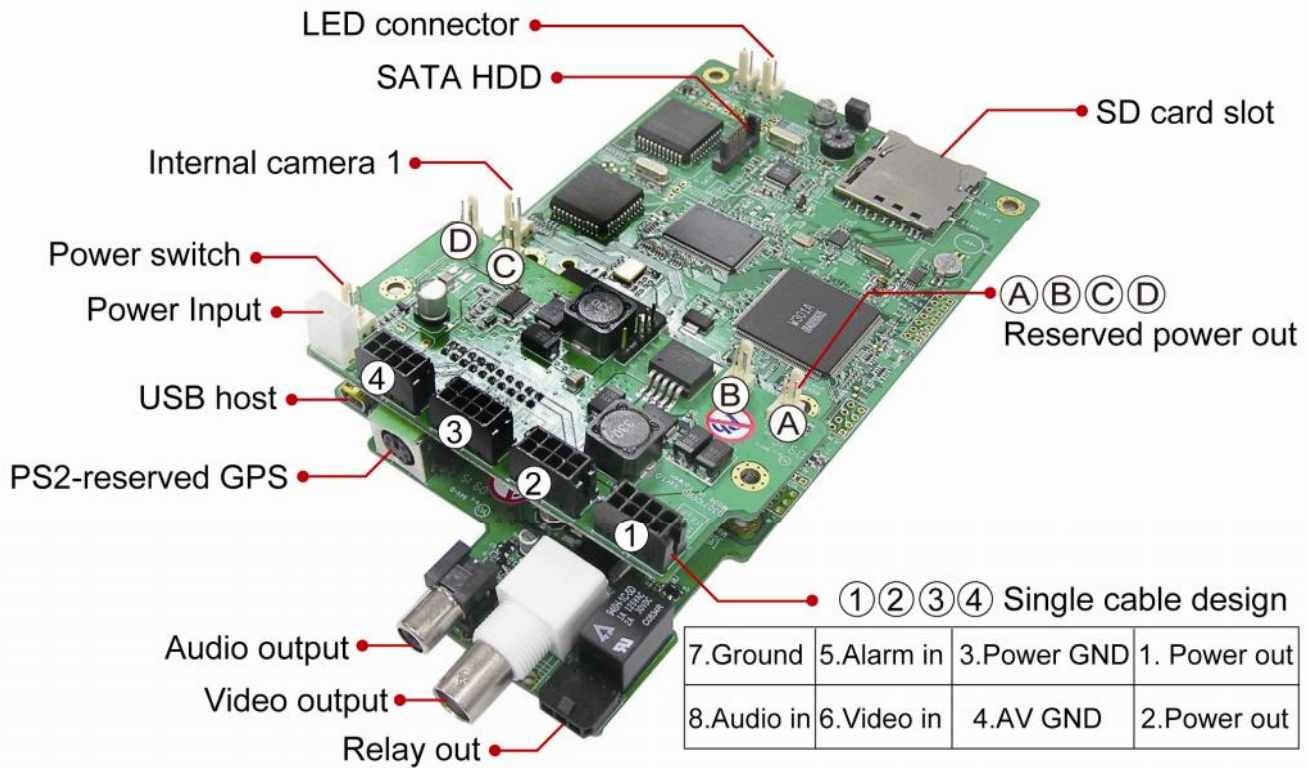
Specifications

Video Compression	MPEG-4 Like / Enhanced JPEG
Video System	NTSC/PAL (Auto detect)
Video Resolution	720x480 (NTSC) / 720x576 (PAL)
Frame Rate Per Second	Up to total 60 fps (NTSC) / 50 fps (PAL) selectable
Video Recording Mode	Schedule continuous, schedule motion, schedule trigger
Video Recording	4 input, 1 output, 3 Level Quality adjustable
Audio Recording	4 input, 1 output
Alarm Input	4 sets external trigger interface
Relay Output	1 Relay output
Motion Record	192 grids and sensitivity can be select
Event Recording	Post-event: 5 seconds; Pre-event: 2 seconds
Time/Date Stamp	Yes, format and position adjustable
RTC Battery	Lasts for 2 weeks w/o power supply
Power Supply	11~36VDC (recommended voltage: 16~30VDC)
Power Output	12V 300mA * 4 for cameras 12V 200mA * 4 reserved
Storage Media	SD (support SDHC) up to 32GB and 2.5 " SATA HDD up to 500GB
Control	IR remote control

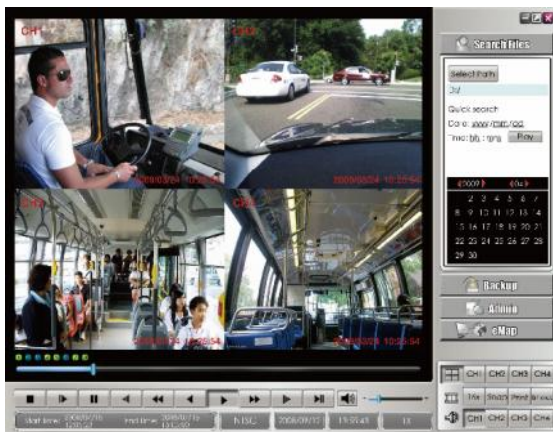
Specifications

Current Consumption	500mA (5V for the main board)
Firmware Upgradeable	Yes, through SD card or USB drive
Backup	USB drive backup, SATA HDD to SD card backup, or software backup on PC
Operating Temperature	0~+50 °C
Dimensions	180x100mm (main board) + 52x100mm (power board)
Reserved	RS232(for GPS)
Playback Recording	Via device itself or bundled software on computer
Computer Requirement	Dual core CPU computer with 1GB memory or above

Illustration



Software

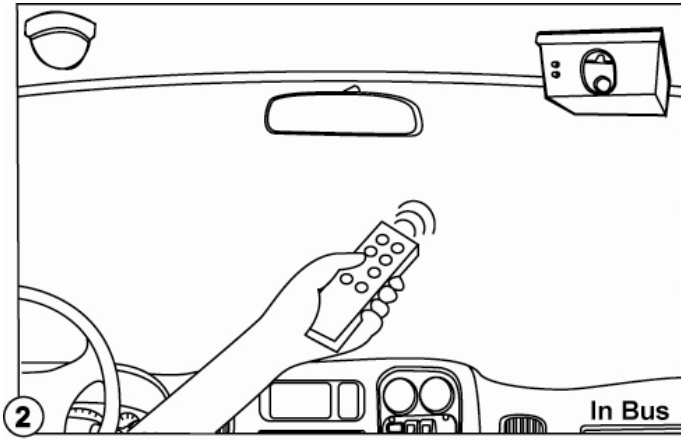
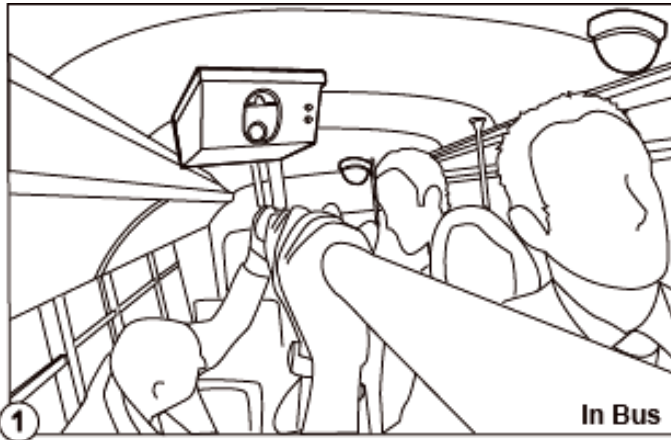


- Unique DVR software to ensure information safety
- 4CH playback simultaneously or selected channel playback
- File quick search
- Format SD card easily
- Manage user authority level
- Backup format selectable: DVR / AVI / JPG

Package Contains

- Main unit x 1
- Cable accessories x 1
- Remote control x1
- CD-ROM (including user Manual, bundled software) x 1

How to use



- a. Connect DVR with cameras. (4 -ch input externally and 1-ch input internally swab-able as channel 1)
- b. Insert your high capacity SD card or SATA HDD.

- a. Remote controllable DVR and OSD.
- b. Record onto removable high capacity SD card or SATA HDD.



- a. Remove the SD card or SATA HDD and insert into any computer to playback video.

- a. 4ch playback simultaneously.
- b. File quick search
- c. Easy Backup
- d. Manage user authority level

Application

